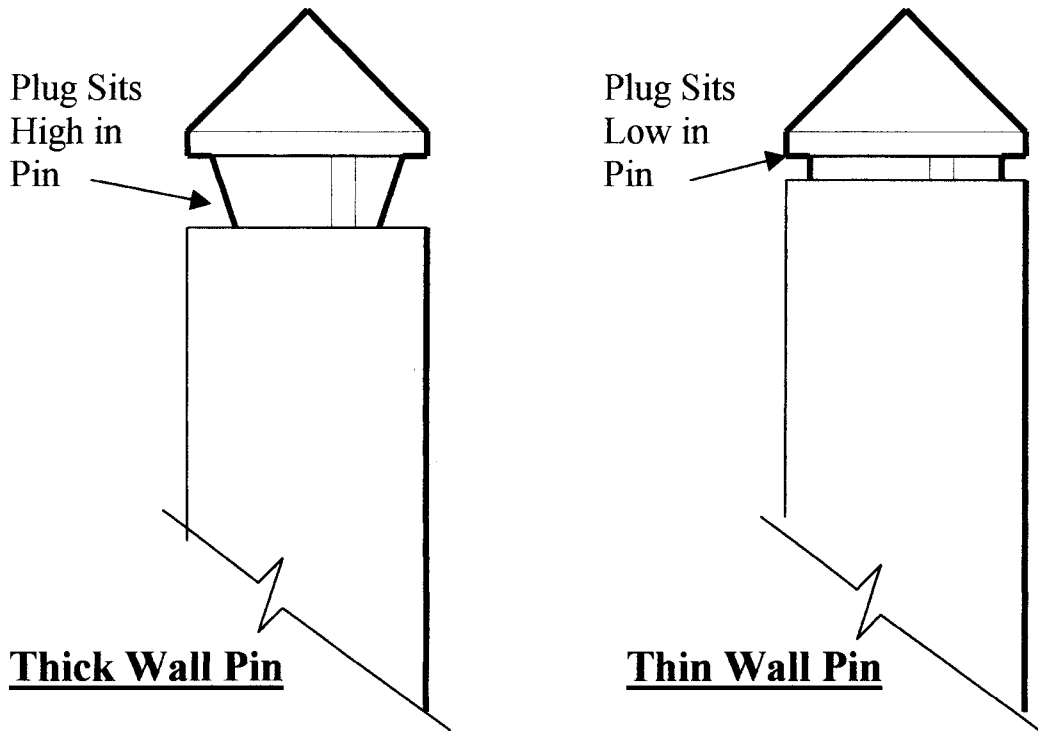
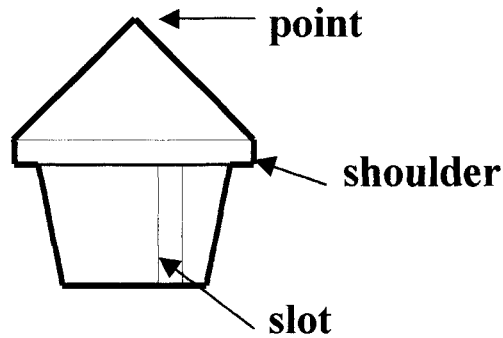


www.pinfoundations.com
253 858-8809 ph
858-8607 fx

INSPECTION PLUGS

These hard plastic plugs keep soil from moving up the inside of the Diamond Pier™ Pins, allowing inspectors to slide a tape measure down the Pin from above to verify its length. If you have Pins with an interior weld bead, align the slot in the plug with the weld before inserting. The allowable tolerance in Pin wall thickness means that some plugs will fit high in the end of the Pins, and some will fit down almost to the plug shoulder. In either case, tap the point of the plug with a hammer to seat it firmly enough in the end of the Pin, so that it will not drop out as you slide it through the Pier sleeves. Don't worry that tapping the end of the plug with the hammer will blunt the point. This would happen anyway as the plug is driven into the soil.



© Copyright 2007, PFI